

Marine Fuel Filtration

200 Series

2

Racor's Marine Spin-on 200 Series fuel filter/water separators are available in three sizes to fit any engine compartment. All three assemblies feature 1/4"-18 NPTF inlet and outlet fuel ports, a unitized mounting bracket for mounting versatility, an in-head primer pump for quick fuel system priming, a metal sediment and water collection bowl (safe for inboard use), a vent plug to easily evacuate trapped air, and a 10 micron Aquabloc®II filter element which repels nearly 100% of all free water found in fuel.

If quality is what you want and filtration is what you need, than a Racor 200 Series fuel filter/water separator is the answer. Experienced sailors trust their engines, their livelihood and even their lives to Racor. Shouldn't you?



215RMAM



230RMAM



245RMAM



Parker Hannifin Corporation
Racor Division, PO Box 3208
Modesto, CA 95354 USA
Phone: 800.344.3286
Fax: 209.529.3278
E-mail: racor@parker.com
www.parker.com/racor



Marine Fuel Filtration

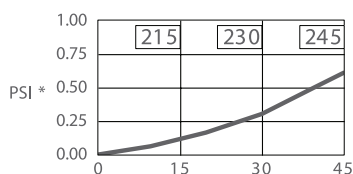
200 Series



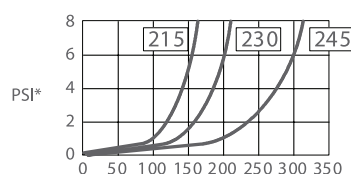
Specifications	215RMAM	230RMAM	245RMAM
Maximum Flow Rate	15 GPH (57 LPH)	30 GPH (114 LPH)	45 GPH (170 LPH)
Port Size	¼"-18 NPTF	¼"-18 NPTF	¼"-18 NPTF
Number of Ports: Inlets Outlets	1 2	1 2	1 2
Replacement Element	R15TUL	R20TUL	R25TUL
Center Threads	1"-14	1"-14	1"-14
Height	8.3 in. (21.1 cm)	9.0 in. (22.9 cm)	10.5 in. (26.7 cm)
Width	4.0 in. (10.2 cm)	4.0 in. (10.2 cm)	4.0 in. (10.2 cm)
Depth	4.0 in. (10.2 cm)	4.0 in. (10.2 cm)	4.0 in. (10.2 cm)
Weight	1.8 lb (0.8 kg)	2.0 lb (0.9 kg)	2.2 lb (1.0 kg)
Clean Pressure Drop	0.12 PSI (0.83 kPa)	0.31 PSI (2.14 kPa)	0.61 PSI (4.21 kPa)
Maximum Operating Pressure	30 PSI (207 kPa)	30 PSI (207 kPa)	30 PSI (207 kPa)
Bowl Capacity	2.0 oz (58 ml)	2.0 oz (58 ml)	2.0 oz (58 ml)
Water Removal Efficiency	99%	99%	99%
Operating Temperature	-40° to +255°F (-40° to +121°C)		

Test Data

(Test results are from controlled laboratory testing. Field results may vary.)



Flow (GPH)
SAE J905 Fuel Flow Restriction



Grams
SAE J905 Solids Capacity
(using SOFTC-2A; 10 mic. Element)

*PSI X 2.036 = inHg. / PSI X 6.895 = kPa

RACOR®

Technical Support:
800.344.3286 ext. 7555
racortech@parker.com

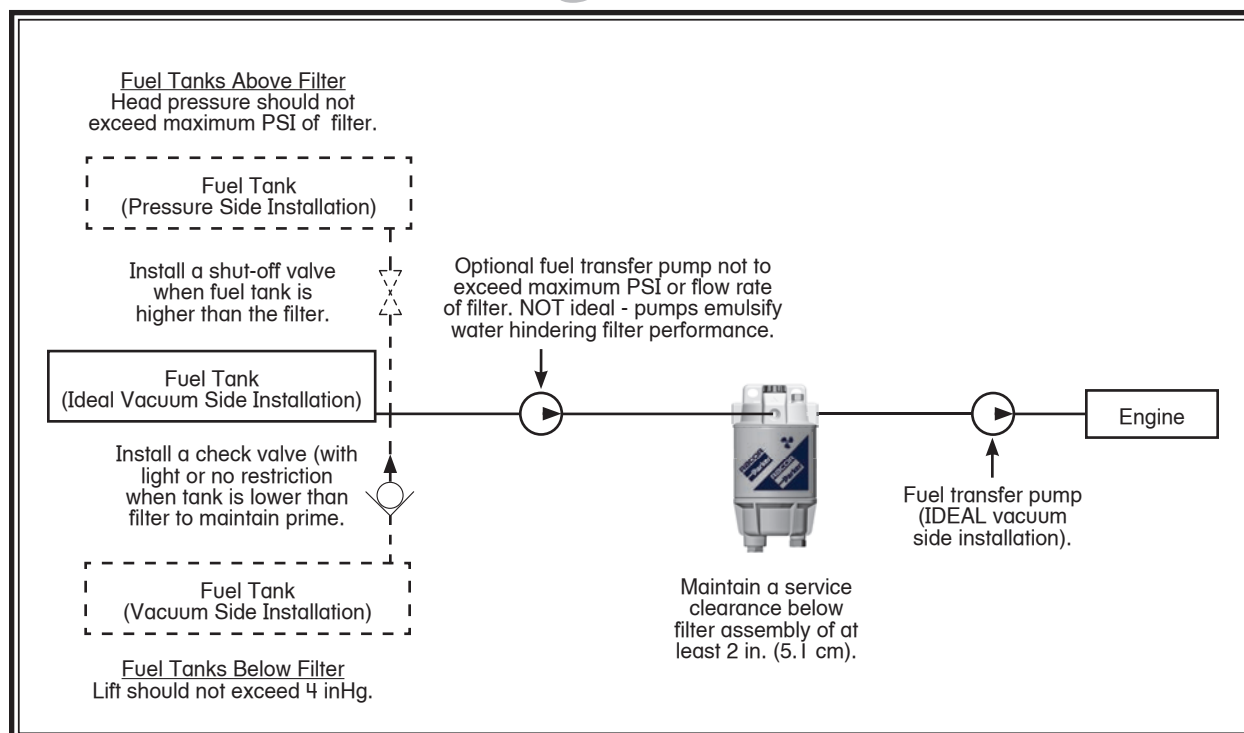


Marine Fuel Filtration

200 Series

2

Installation Diagram



Installation diagram applies to all 200 Series filters. Model 215RMAM shown above. Racor offers hose and fittings to complete this installation. See Marine Accessories.

Mounting Information



303

RACOR®

Technical Support:
800.344.3286 ext. 7555
racortech@parker.com

Marine Fuel Filtration

200 Series

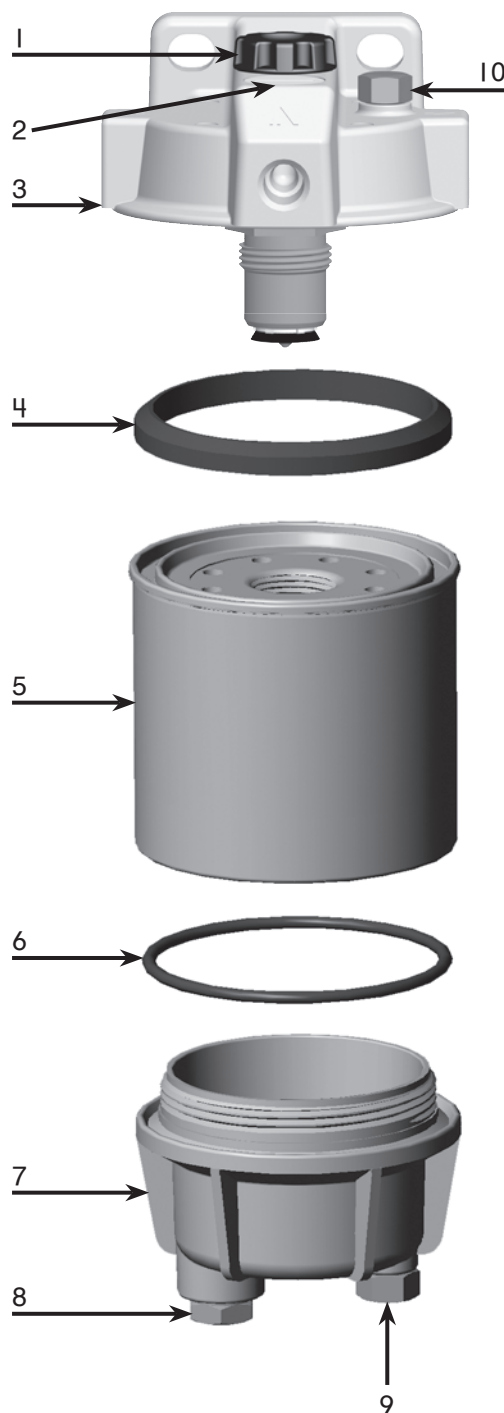
Replacement Parts

215RMAM, 230RMAM and 245RMAM

- | Part No. | Description |
|---|--|
| 1. RK20025-01 | Primer Pump Kit |
| 2. RK20011
RK20742 | Checkball Kit with Plastic Cap
Metal Cap Kit |
| 3. RK20046-01 | Head Kit (1/4" NPTF Ports)
(includes #'s 1-4) |
| 4. RK22061 | Gasket Kit |
| 5. Replacement Elements (includes #'s 4 and 6)
R15TUL
R20TUL
R25TUL | 10 Micron (UL Recognized)
10 Micron (UL Recognized)
10 Micron (UL Recognized) |
| 6. RK22244 | Bowl O-ring Kit |
| 7. RK22368 | Metal Bowl Kit
(includes #'s 6, 8 and 9)
(3/8" NPT drain Plug)
(1/2"-20 probe port) |
| 8. 918-N6 | Steel Plug (3/8" NPT) |
| 9. RK20022 | Metal Plug Kit (1/2"-20 UNF) |
| 10. RK10110 | Metal Vent Plug Kit
(3/8"-16 UNF) |

Additional Parts (not shown)

- | | |
|----------------|---------------------------|
| RK20075 | Compleat Seal Service Kit |
| RK12041 | Port Plug Kit (1/4" NPT) |
| 22360 | Installation Instructions |



RACOR

Technical Support:
800.344.3286 ext. 7555
racortech@parker.com

Marine Fuel Filtration

200 Series

2

Hand Primer Pump Upgrade



Old Head Kit RK20046
Old Primer Pump Kit# RK20025



New Head Kit RK20046-01
New Primer Pump Kit# RK20025-01

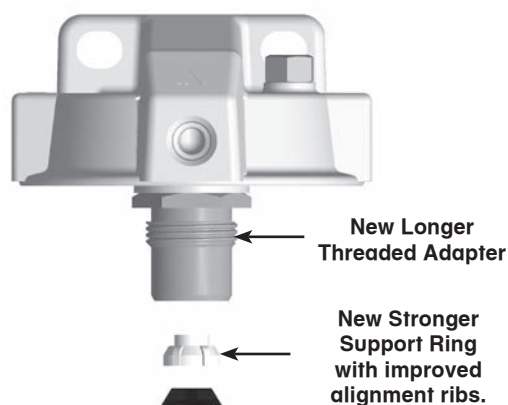
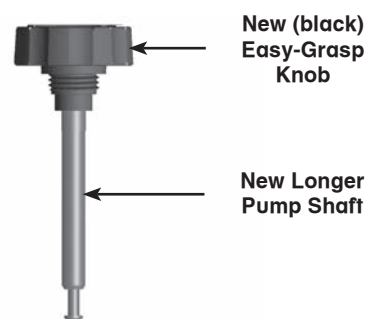
Benefits

- Up to 37% increase in volume of fuel pumped per stroke
- Improved strength and alignment
- Improved ease of operation
- Reduced restriction in fuel flow
- Changeable in the field

This enhancement is possible by increasing the stroke length, by about 1/2", on the pump shaft and the element threaded adapter. Additionally, the knob and support ring have been redesigned to be more robust.

This change also affects replacement kits for the primer pump and head assemblies. The new style primer pump requires an additional 0.5 inch of space above the assembly (2 inches total) to utilize the added length of stroke; however, the primer pump will perform as always without any mounting modifications.

The new easy-grasp pump knob is larger than current knobs and the color will be changed from white to black to make a clear visual change between current pumps and newer versions.



New Primer Pump Assembly
Exploded View