

COMPANY CATALINA/CA.

BOAT MODEL

C28/32

GALLONS

19 DIESEL

PART NO.

30388

REVISION DATES:

4-29-05 TT

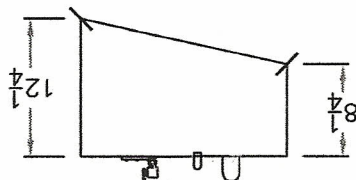
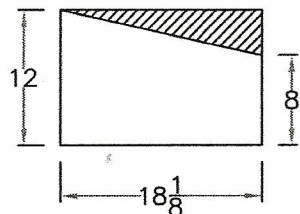
10-27-05

*

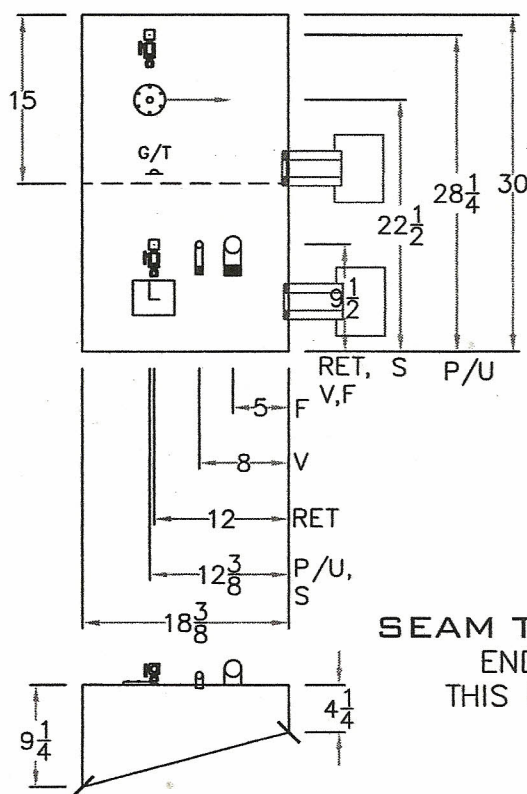
*

PUNCH PROGRAM
AVAILABLE
BOTTOM PATTERN
AVAILABLE

T5= $1\frac{1}{2}$
T6= $\frac{3}{32}$
T7= $1\frac{1}{16}$
T8= $\frac{5}{8}$

**BENDER NOTE**


BEND TANK ON
SMALL BENDER

**SEAM TANK NOTE**

END PLATE
THIS END FIRST

60"-TOP-6 PER

60"-BOTT.-13 PER

SHEET		TOP/SIDES	29 $\frac{3}{4}$ X 38 $\frac{1}{8}$	FILL	1 $\frac{1}{2}$ @ 90°
THICKNESS	.125	BOTTOM	20 X 31	VENT	5 $\frac{1}{8}$ @ 90°
BAFFLES	NO. 1	MATL.	(2) 12 $\frac{1}{4}$ x 16	GAUGE	STD. ELECT. 9" BEND
DRAGS	NO.	MATL.		PICK UP	3 $\frac{3}{8}$ X 1 $\frac{1}{4}$ SS W/S.O.V.W/A.P. 10 $\frac{1}{8}$
TABS	NO.	MATL.		RETURN	3 $\frac{3}{8}$ X 1 $\frac{1}{4}$ SS W/S.O.V.W/A.P. 8
THIS DOCUMENT AND THE INFORMATION CONTAINED HEREON IS THE PROPERTY OF EZELL INDUSTRIES, INC. AND ALL UNAUTHORIZED USE OF AND REPRODUCTION ARE PROHIBITED.				DRAIN	
 <div> EZELL INDUSTRIES, INC. 15030 Beach Road, Perry, FL 32348 Phone 850-578-2558 Fax 850-578-2193 </div>				ACCESSORIES	
				DRAWN BY	TT
				PROGRAMMED BY	TT
				DATE DRAWN	12-18-03
				CUSTOMER ORDER NO.	50006
				CUST. PART NO.	252-19 30388

⊕ THIS DRAWING IS CERTIFIED AND MEETS EZELL IND. STANDARDS.