

Whoosh, #15 – Combination Anchor Washdown/Manual bilge pump system – Bev Wright
System designed and installed by Helmkamp Marine, Chesapeake Beach, MD, (618) 567-6288

In 04/2015, Helmkamp designed and installed a single Flo5.0 diaphragm water pressure pump, model 42755, with two y-valves that can serve as both an anchor washdown pump system and a manual bilge pump system. The macerator pump was broken and was not going to be used in the Chesapeake Bay, so the existing raw water intake valve under the starboard settee was used to bring in water for the washdown pump in the anchor locker. The pump is powerful enough to produce a strong volume of water to the anchor locker. A coiled hose was left in place in the forward bilge compartment to reach all three bilge areas, under the holding tank and under the galley sink, and even the fresh water tank under the port settee. The hose is not long enough to reach the forward water tank but I can probably attach another hose to the coiled hose to pump out the forward water tank. All bilge areas have been bone dry for several weeks. Parts and 9.5 hrs labor... \$1,100. A dry bilge...priceless.



003-anchor washdown-bilge pump system

Whoosh, #15 – Combination Anchor Washdown/Manual bilge pump system – Bev Wright
System designed and installed by Helmkamp Marine, Chesapeake Beach, MD, (618) 567-6288



004-anchor washdown hose



005-Supply and raw water hoses

Whoosh, #15 – Combination Anchor Washdown/Manual bilge pump system – Bev Wright
System designed and installed by Helmkamp Marine, Chesapeake Beach, MD, (618) 567-6288



006-Bilge supply hose



007-Bilge out hose

Whoosh, #15 – Combination Anchor Washdown/Manual bilge pump system – Bev Wright
System designed and installed by Helmkamp Marine, Chesapeake Beach, MD, (618) 567-6288

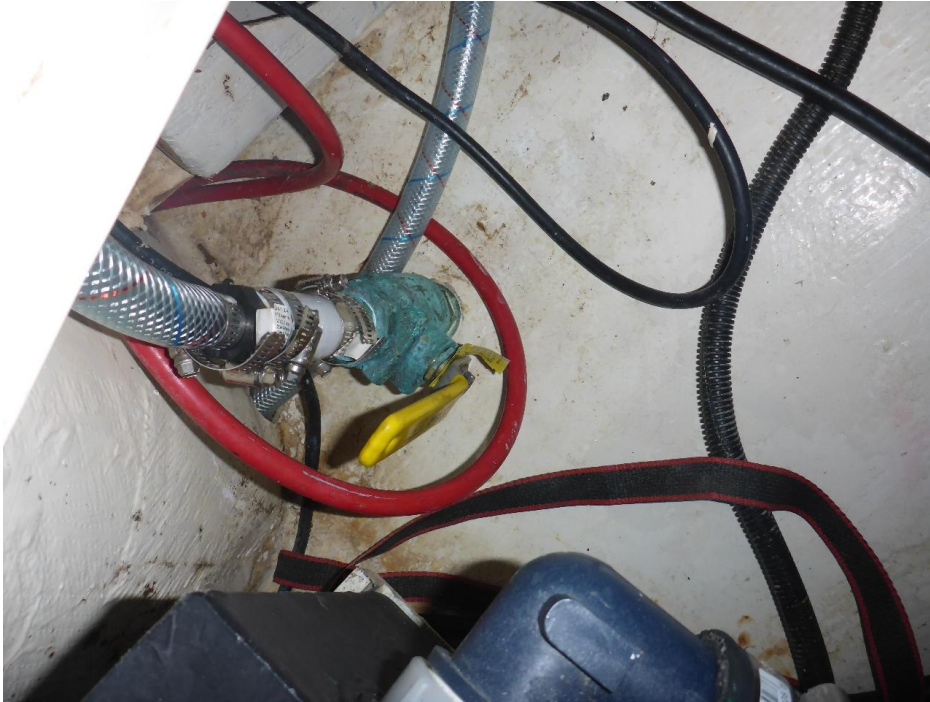


008-hose to bilge pump



009-hose to bilge pump

Whoosh, #15 – Combination Anchor Washdown/Manual bilge pump system – Bev Wright
System designed and installed by Helmkamp Marine, Chesapeake Beach, MD, (618) 567-6288



010-raw water intake from old macerator



011-hose coiled in forward DRY bilge

Whoosh, #15 – Combination Anchor Washdown/Manual bilge pump system – Bev Wright
System designed and installed by Helmkamp Marine, Chesapeake Beach, MD, (618) 567-6288



012-middle bilge-DRY

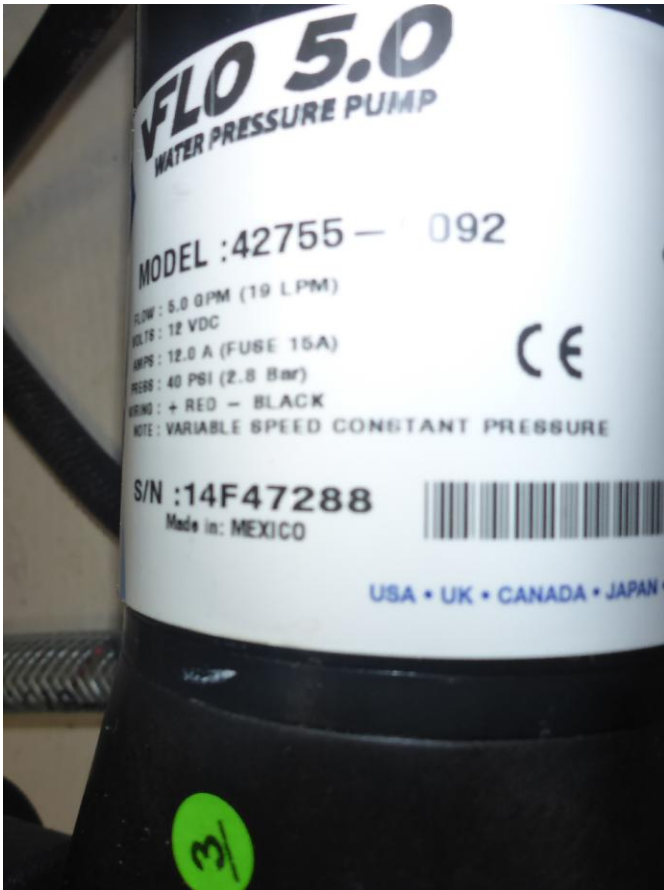


013-aft main bilge-DRY - clear water in shower bilge

Whoosh, #15 – Combination Anchor Washdown/Manual bilge pump system – Bev Wright
System designed and installed by Helmkamp Marine, Chesapeake Beach, MD, (618) 567-6288



014-view of open compartments under starboard settee



015-diaphragm pump FLO 5.0, model 42755

Whoosh, #15 – Combination Anchor Washdown/Manual bilge pump system – Bev Wright
System designed and installed by Helmkamp Marine, Chesapeake Beach, MD, (618) 567-6288



001-Before – dirty water in both bilges



002-Before – water in forward and middle bilge areas